

# DESIGN ROOF EXHAUSTS

## Design roof exhaust

**Design roof exhaust**

**66014096**

Ø150/Ø160  
Black RAL9005  
For tiled roofs



## Design roof exhaust

**Design roof exhaust**

**66014097**

Ø150/Ø160  
Terracotta RAL8004  
For tiled roofs



## Design roof exhaust

**Design roof exhaust**

**66014095**

Ø150/Ø160  
Black RAL9005  
For slated roofs

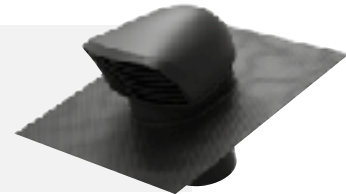


## Design roof exhaust

**Design roof exhaust**

**66014150**

Ø150/Ø160  
Black RAL9005  
Flex for tiled roofs

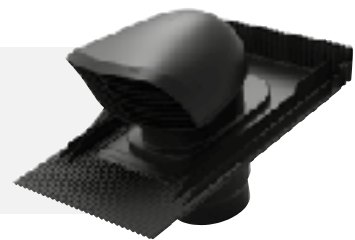


## Design roof exhaust XL

**Design roof exhaust**

**66014152**

Ø180/Ø200  
Black RAL9005  
Flex for tiled roofs



## Design roof exhaust XL

**Design roof exhaust**

**66014154**

Ø180/Ø200  
Terracotta RAL8004  
Flex for tiled roofs



## Design roof exhaust XL

**Design roof exhaust**

**66014153**

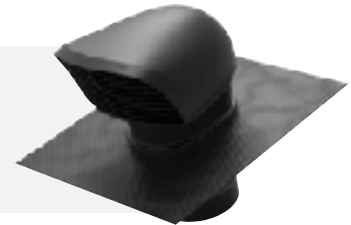
Ø180/Ø200  
Black RAL9005  
For slated roofs



# DESIGN ROOF EXHAUSTS & WALL LOUVRES

## Design roof exhaust XL

**Design roof exhaust** **66014151**  
 Ø180/Ø200  
 Black RAL9005  
 Flex for tiled roofs



## Roof supply All weather

**Design roof supply All weather** **76050402**  
 Ø160  
 Black RAL9005

Order accompanying tile separately  
**Universal roof tile black RAL9005** **66032302**  
**Universal roof tile terracotta RAL8004** **66032303**  
**Felt pass through for flat roof** **66032304**



## Design roof exhaust

**Design roof exhaust** **66014262**  
 Ø125  
 Black RAL9005  
 For flat roofs



## Design roof exhaust XL

**Design roof exhaust** **66014263**  
 Ø160  
 Black RAL9005  
 For flat roofs



## Wall louvre

**Wall louvre grey anodised** **66114053**  
**Wall louvre white RAL9010** **66614053**  
**Wall louvre brown RAL8019** **66714053**  
 300x300 mm  
 Ø160 - Ø150



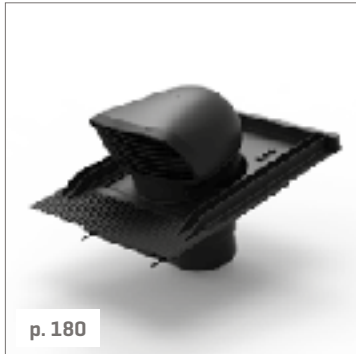
## Wall louvre

**Wall louvre black RAL7021 Ø150** **76050001**  
**Wall louvre white RAL9016 Ø150** **76050002**  
**Wall louvre black RAL7021 Ø180** **76050003**  
**Wall louvre white RAL9016 Ø180** **76050004**  
 With drainage profile



# TECHNICAL DATA SHEET:

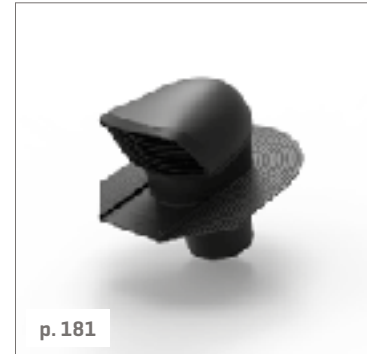
## Design roof exhausts



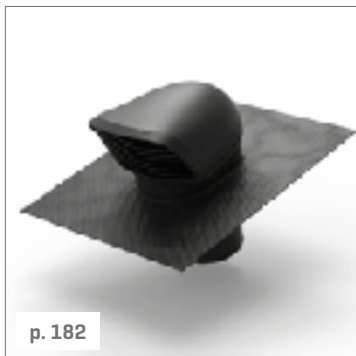
*Design roof exhaust*  
66014096



*Design roof exhaust*  
66014097



*Design roof exhaust for slate roofs*  
66014095



*Design roof exhaust Flex*  
66014150



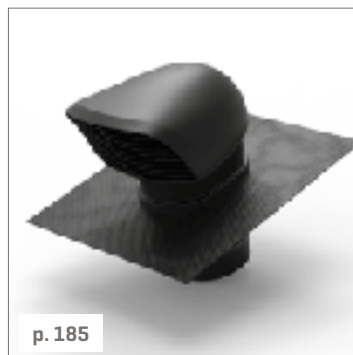
*Design roof exhaust XL*  
66014152



*Design roof exhaust XL*  
66014154



*Design roof exhaust for slate roofs XL*  
66014153



*Design roof exhaust Flex XL*  
66014151



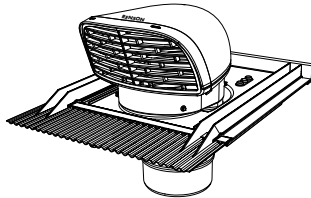
*Roof supply All Weather black*  
76050402

# TECHNICAL DATA SHEET:

## Design roof exhaust: 66014096 - 66014097

### PRODUCT CHARACTERISTICS

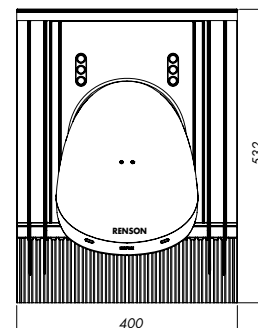
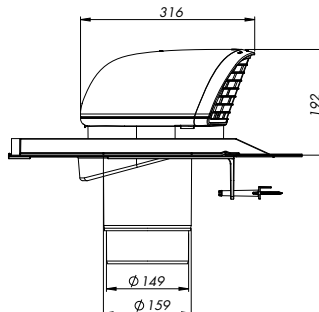
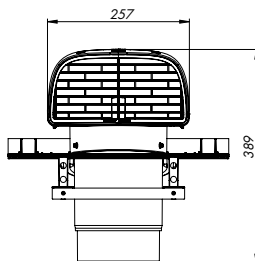
- Low pressure drop:
  - 14 Pa at 250 m<sup>3</sup>/h
  - 30 Pa at 375 m<sup>3</sup>/h
- Connection diameter 150/160 mm
- Material: polypropylene
  - Weather- and shockproof
  - Recyclable
  - Resists constant temperatures between -30 °C up to 80 °C
  - UV-protected
- Built-in with universal roof tile
  - Lead replacement material
  - Possibility for different angles of inclination
  - Compatible with most types of roof tiles
- Aesthetic design
- Exhaust parallel with the roof [less fouling]
- Removable louvre for cleaning, if necessary
- Dimensions:
  - Roof exhaust: 316 x 257 x 389 mm [L x W x H]
  - Universal roof tile: 532 x 400 mm [L x W]



66014096

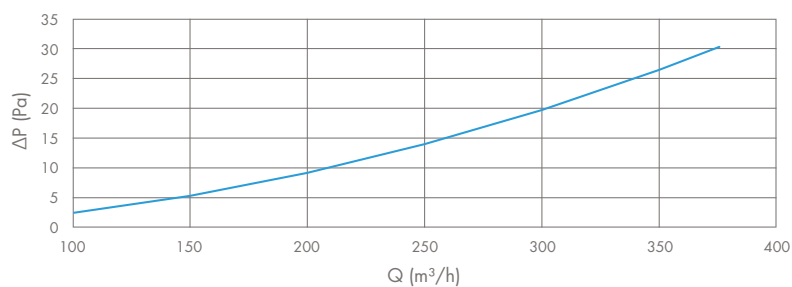


66014097



### CURVE PRESSURE DROP (exhaust)

#### Pressure drop based on air flow



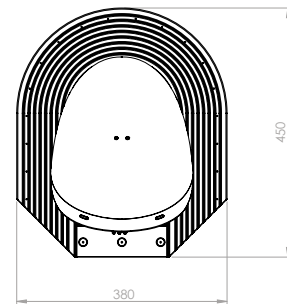
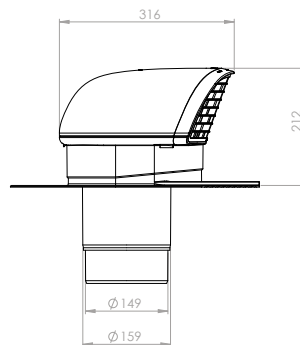
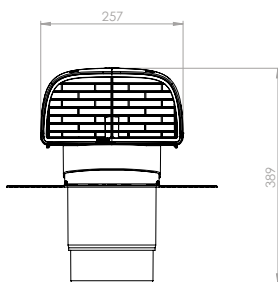
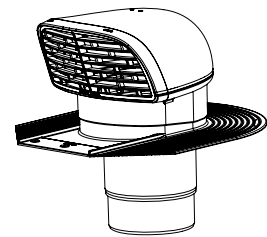
Q [m <sup>3</sup> /h]	Δp [Pa]
100	2,5
150	5,3
200	9,2
250	14
300	19,8
350	26,6
375	30,3

# TECHNICAL DATA SHEET:

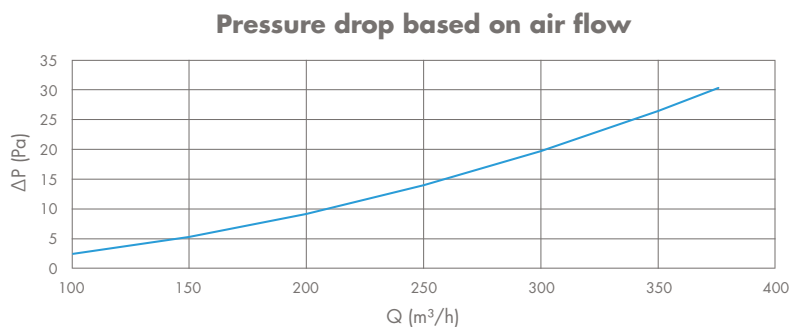
## Design roof exhaust for slate roofs - 66014095

### PRODUCT CHARACTERISTICS

- Low pressure drop:
  - 14 Pa at 250 m<sup>3</sup>/h
  - 30 Pa at 375 m<sup>3</sup>/h
- Connection diameter 150/160 mm
- Material: polypropylene
  - Weather- and shockproof
  - Recyclable
  - Resists constant temperatures between -30 °C up to 80 °C
  - UV-protected
- Built-in with slate roof tile
  - Lead replacement material
  - Possibility for different angles of inclination
- Aesthetical design
- Exhaust parallel with the roof [less fouling]
- Removable louvre for cleaning, if necessary
- Dimensions:
  - Roof exhaust: 316 x 257 x 389 mm [L x W x H]
  - Slate roof tile: 450 x 380 mm [L x W]



### CURVE PRESSURE DROP (exhaust)



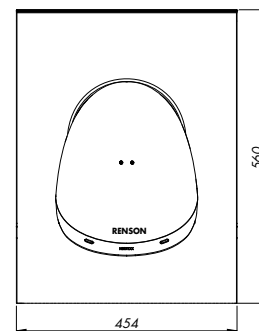
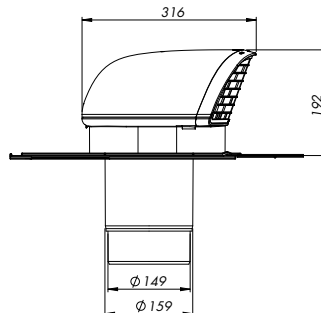
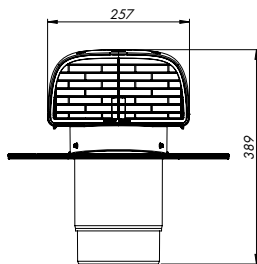
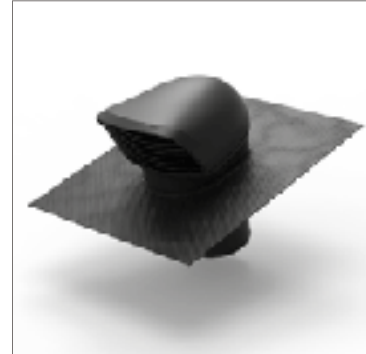
Q [m <sup>3</sup> /h]	Δp [Pa]
100	2,5
150	5,3
200	9,2
250	14
300	19,8
350	26,6
375	30,3

# TECHNICAL DATA SHEET:

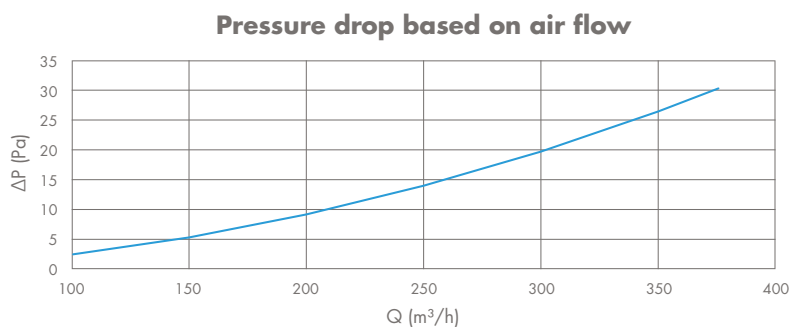
## Design roof exhaust Flex - 66014150

### PRODUCT CHARACTERISTICS

- Low pressure drop:
  - 14 Pa at 250 m<sup>3</sup>/h
  - 30 Pa at 375 m<sup>3</sup>/h
- Connection diameter 150/160 mm
- Material: polypropylene
  - Weather- and shockproof
  - Recyclable
  - Resists constant temperatures between -30 °C up to 80 °C
  - UV-protected
- Built-in with a fierce lead-free flexible slab:
  - Lead replacement based on silicone with aluminium reinforcement
  - Remains strong and sustainable within a big range of temperatures: -30 °C/+180 °C [-22 °F/+356 °F]
  - UV-resistant
  - Does not react with roofing and does not cause stripes
  - Faster to process than lead or other lead replacement materials
  - Easy to crease by hand or by lead beaters
  - Harmless for people and environment and light weighted
- Aesthetical design
- Exhaust parallel with the roof [less fouling]
- Removable louvre for cleaning, if necessary
- Dimensions:
  - Roof exhaust: 316 x 257 x 389 mm [L x W x H]
  - Flexible slab: 560 x 454 mm [L x W]



### CURVE PRESSURE DROP [exhaust]



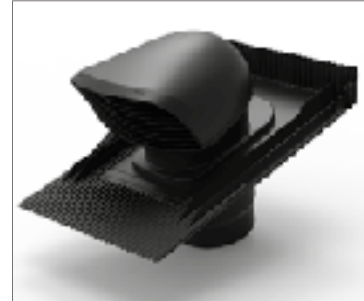
Q [m <sup>3</sup> /h]	Δp [Pa]
100	2,5
150	5,3
200	9,2
250	14
300	19,8
350	26,6
375	30,3

# TECHNICAL DATA SHEET:

## Design roof exhaust XL - 66014152 - 66014154

### PRODUCT CHARACTERISTICS

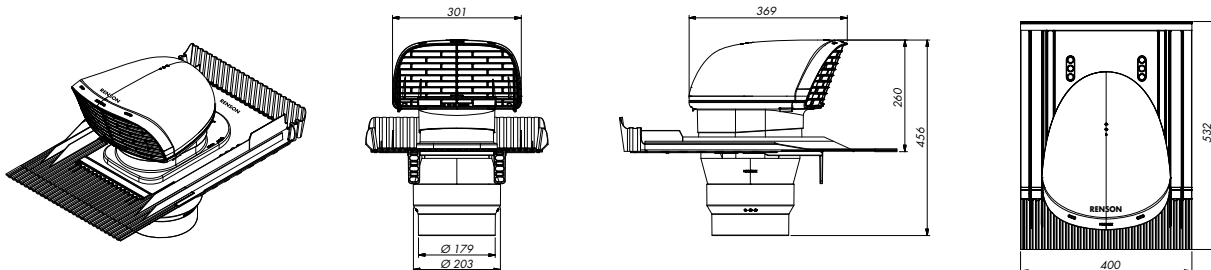
- Low pressure drop:
  - Exhaust: 10 Pa at 404 m<sup>3</sup>/h - 20 Pa at 584 m<sup>3</sup>/h
  - Intake: 10 Pa at 334 m<sup>3</sup>/h - 20 Pa at 467 m<sup>3</sup>/h
- Connection diameter 180/200 mm
- Material: polypropylene
  - Weather- and shockproof
  - Recyclable
  - Resists constant temperatures between -30 °C up to 80 °C
  - UV-protected
- Built-in with universal roof tile
  - Lead replacement material
  - Possibility for different angles of inclination
  - Compatible with most types of roof tiles
- Aesthetic design
- Exhaust parallel with the roof [less fouling]
- Removable louvre for cleaning, if necessary
- Dimensions:
  - Roof exhaust: 369 x 301 x 456 mm [L x W x H]
  - Universal roof tile: 532 x 400 mm [L x W]



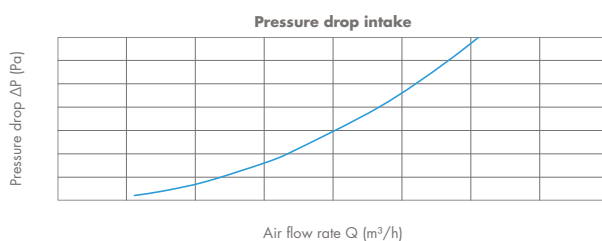
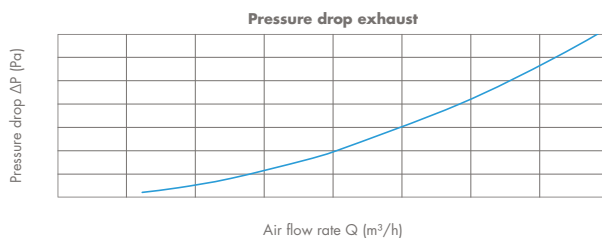
66014152



66014154



### CURVES PRESSURE DROP (exhaust-intake)



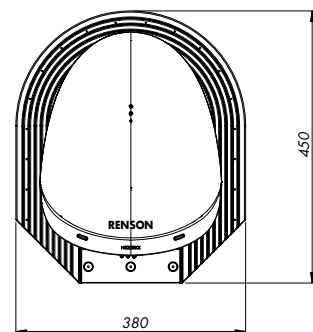
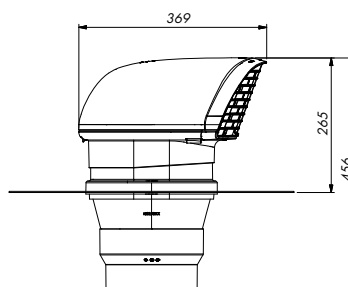
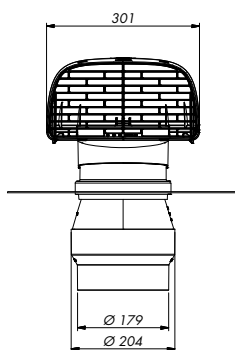
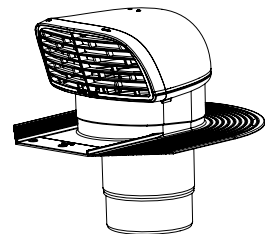
$\Delta p$ [Pa]	Intake $Q$ [m <sup>3</sup> /h]	Exhaust $Q$ [m <sup>3</sup> /h]
1	110	120
2	153	173
4	214	249
8	300	359
10	334	404
20	467	584
30	568	723

# TECHNICAL DATA SHEET:

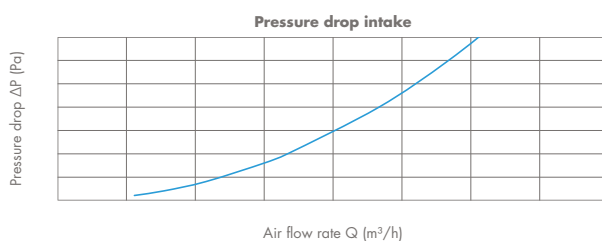
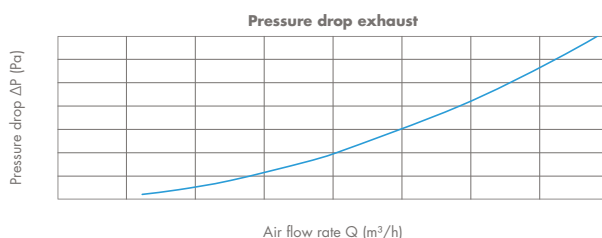
## Design roof exhaust for slate roofs XL - 66014153

### PRODUCT CHARACTERISTICS

- Low pressure drop:
  - Exhaust: 10 Pa at 404 m<sup>3</sup>/h - 20 Pa at 584 m<sup>3</sup>/h
  - Intake: 10 Pa at 334 m<sup>3</sup>/h - 20 Pa at 467 m<sup>3</sup>/h
- Connection diameter 180/200 mm
- Material: polypropylene
  - Weather- and shockproof
  - Recyclable
  - Resists constant temperatures between -30 °C up to 80 °C
  - UV-protected
- Built-in with slate roof tile
  - Lead replacement material
  - Possibility for different angles of inclination
- Aesthetical design
- Exhaust parallel with the roof [less fouling]
- Removable louvre for cleaning, if necessary
- Dimensions:
  - Roof exhaust: 369 x 301 x 456 mm [L x W x H]
  - Slate roof tile: 450 x 380 mm [L x W]



### CURVES PRESSURE DROP [exhaust-intake]



$\Delta p$ [Pa]	Intake Q [m <sup>3</sup> /h]	Exhaust Q [m <sup>3</sup> /h]
1	110	120
2	153	173
4	214	249
8	300	359
10	334	404
20	467	584
30	568	723

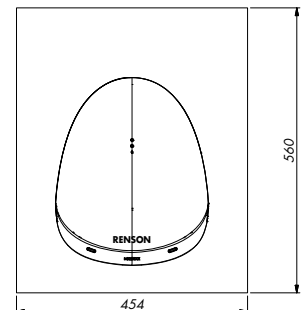
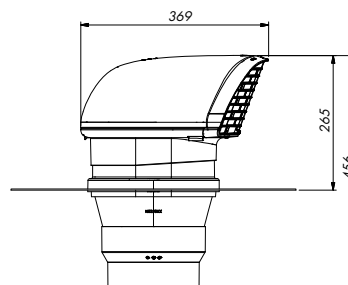
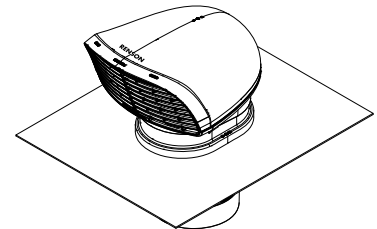
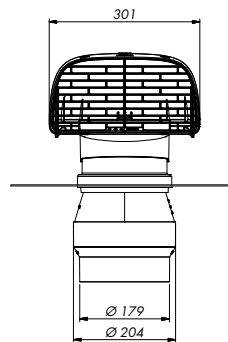


# TECHNICAL DATA SHEET:

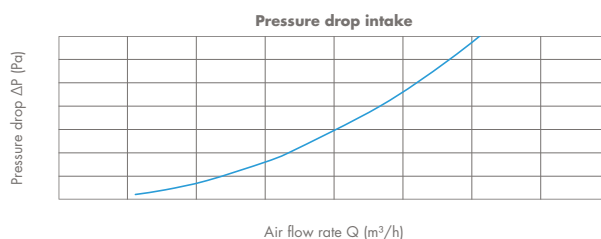
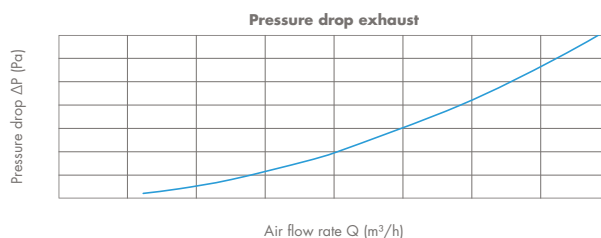
## Design roof exhaust Flex XL - 66014151

### PRODUCT CHARACTERISTICS

- Low pressure drop:
  - Exhaust: 10 Pa at 404 m<sup>3</sup>/h - 20 Pa at 584 m<sup>3</sup>/h
  - Intake: 10 Pa at 334 m<sup>3</sup>/h - 20 Pa at 467 m<sup>3</sup>/h
- Connection diameter 180/200 mm
- Material: polypropylene
  - Weather- and shockproof
  - Recyclable
  - Resists constant temperatures between -30 °C up to 80 °C
  - UV-protected
- Built-in with a fierce lead-free flexible slab:
  - Lead replacement based on silicone with aluminium reinforcement
  - Remains strong and sustainable within a big range of temperatures: -30 °C/+180 °C [-22 °F/+356 °F]
  - UV-resistant
  - Does not react with roofing and does not cause stripes
  - Faster to process than lead or other lead replacement materials
  - Easy to crease by hand or by lead beaters
  - Harmless for people and environment and light weighted
- Aesthetical design
- Exhaust parallel with the roof [less fouling]
- Removable louvre for cleaning, if necessary
- Dimensions:
  - Roof exhaust: 369 x 301 x 456 mm [L x W x H]
  - Flexible slab: 560 x 454 mm [L x W]



### CURVES PRESSURE DROP (exhaust-intake)



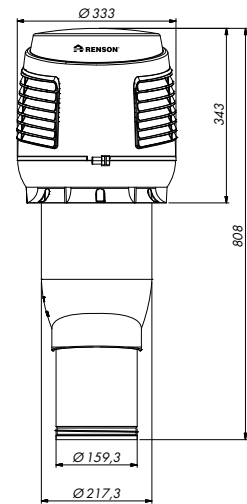
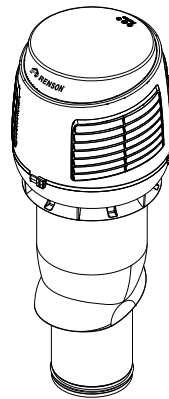
$\Delta p$ [Pa]	Intake $Q$ [m <sup>3</sup> /h]	Exhaust $Q$ [m <sup>3</sup> /h]
1	110	120
2	153	173
4	214	249
8	300	359
10	334	404
20	467	584
30	568	723

# TECHNICAL DATA SHEET:

## Roof supply All Weather - 76050402

### PRODUCT CHARACTERISTICS

- Water repellent roof supply: according to EN13030:2001, class A at 3 m/s
- Low pressure drop:
  - Exhaust: 10 Pa at 281 m<sup>3</sup>/h - 30 Pa at 494 m<sup>3</sup>/h
  - Intake: 10 Pa at 180 m<sup>3</sup>/h - 60 Pa at 456 m<sup>3</sup>/h
- Connection diameter 160 mm
- Material: polypropylene
  - Weather- and shockproof
  - Recyclable
  - Resists constant temperatures between -30 °C up to 80 °C
  - UV-protected
- Built-in with the roof tiles mentioned below
  - Lead replacement material
  - Possibility for different angles of inclination
  - Compatible with most types of roof tiles
- Aesthetic design with internal mechanism against water penetration
- Removable top part for cleaning, if necessary
- Dimensions: 333 x 808 mm [B x H]

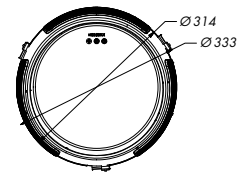


### Installation only in combination with:

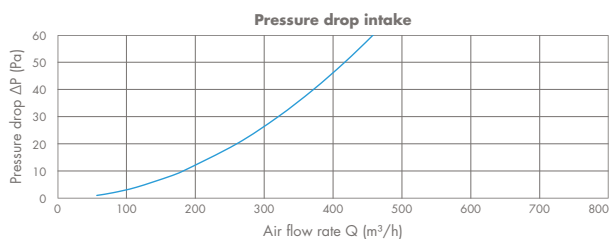
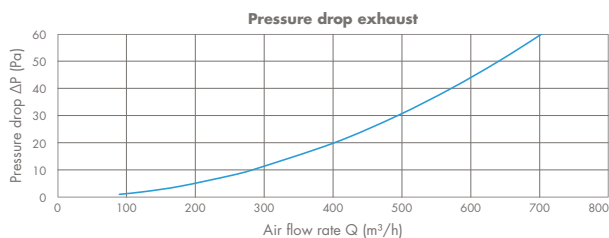
Black - 66032302

Terracotta - 66032303

Felt pass through - 66032304



### CURVES PRESSURE DROP [exhaust-intake]



Δp [Pa]	Intake Q [m <sup>3</sup> /h]	Exhaust Q [m <sup>3</sup> /h]
1	55	86
2	78	123
4	112	176
8	160	251
10	180	281
20	258	401
30	318	494
40	370	573
50	415	642
60	456	705

# TECHNICAL DATA SHEET:

Wall exhaust: 66114053 - 66614053 - 66714053

The plenum of the wall exhaust is attached to the grid.

## AVAILABLE MODELS

According to the available colors of the grid:

- Satin anodised [20 micron] [66114053]
- White RAL 9010 [66614053]
- Brown RAL 8019 [66714053]

## DIMENSIONS

Base of the plenum: 286 x 286 mm

Height of the plenum: 78,6 mm

Grid: 325 x 325 mm

Inside diameter: Ø 150 mm

Outside diameter: Ø 157 mm

Structural dimension [fitting dimensions]: 300 x 300 mm  
provide clips for attachment

No insect mesh

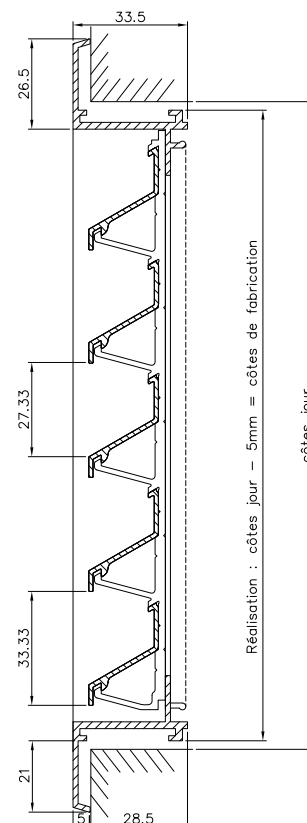
## PRESSURE DROP - FLOW

[when used as exhaust]

$\Delta p$ [Pa]	Q [m <sup>3</sup> /h]
3,8	125
9,3	200
19,8	300
26,5	350
34,1	400
51,8	500
72,9	600



Grille and plenum





# TECHNICAL DATA SHEET:

## Wall exhaust: 76050001 - 76050002

### Wall exhaust with drainage

- Drainage to prevent moisture on the facade

### AVAILABLE MODELS

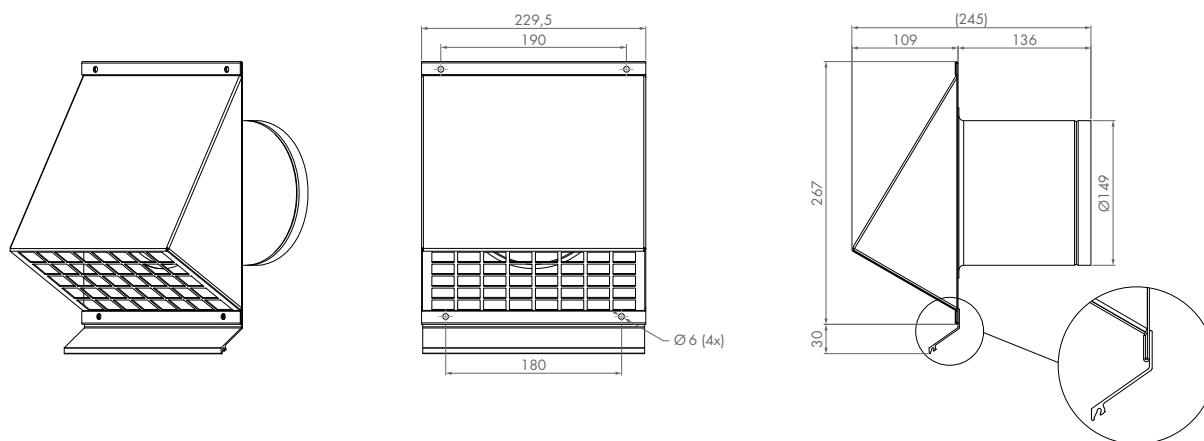
According to the available colors of the grid:

- Black [76050001]
- White [76050002]



### DIMENSIONS

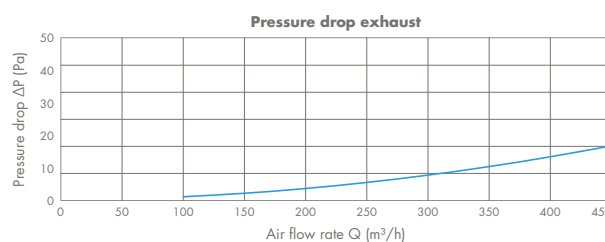
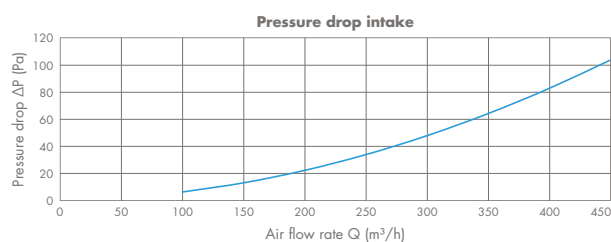
Base of the exhaust: 230 x 267 mm  
 Depth of the exhaust: 109 mm  
 Diameter: Ø 150 mm



### PRESSURE DROP - FLOW

INTAKE	
Q [m³/h]	Δp [Pa]
100	5,7
150	12,5
200	21,7
250	33,4
300	47,4
350	63,7
400	82,3
450	103,3

EXHAUST	
Q [m³/h]	Δp [Pa]
100	2,2
150	4,8
200	8,3
250	12,8
300	18,2
350	24,5
400	31,7
450	39,8



# TECHNICAL DATA SHEET:

## Wall exhaust: 76050003 - 76050004

### Wall exhaust with drainage

- Drainage to prevent moisture on the facade

### AVAILABLE MODELS

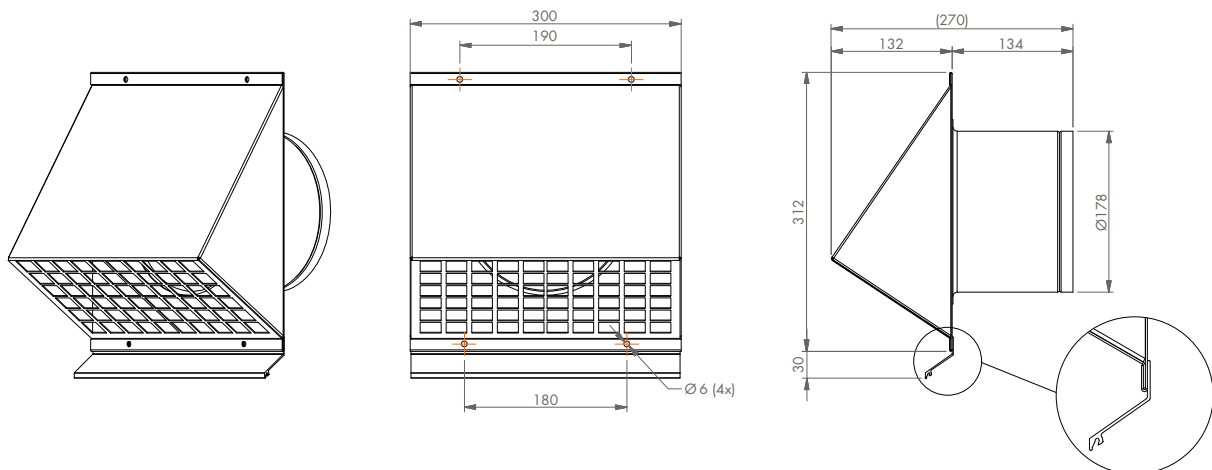
According to the available colors of the grid:

- Black [76050003]
- White [76050004]



### DIMENSIONS

Base of the exhaust: 300 x 312 mm  
 Depth of the exhaust: 132 mm  
 Diameter: Ø 180 mm



### PRESSURE DROP - FLOW

INTAKE	
Q [m³/h]	Δp [Pa]
100	2,5
150	5,4
200	9,4
250	14,3
300	20,2
350	27,1
400	35,0
450	43,8

EXHAUST	
Q [m³/h]	Δp [Pa]
100	0,8
150	1,8
200	3,2
250	4,9
300	6,9
350	9,3
400	12,1
450	15,2

